

WARRANTY CARD

Name		Phone No.	
Address			
Model			
Date of purchase			
Warranty period			

1. Please keep your product warranty card properly.
2. When you need to maintain the product, please fill in the warranty information completely, make sure the font is neat and easy to identify.
3. When you need the after-sales service, please show the product warranty card and related purchase information.
4. The product shall be provided with relevant after-sales services in accordance with the national guarantees regulations.

Warranty record:

Notes:

1. The maintenance of the product shall be free of charge within one year from the date of purchase. The rechargeable battery is guaranteed for half a year. In case of product quality problems during the warranty period, please go to the designated maintenance site with the warranty card and purchase bill for free warranty service.
2. The following cases are not covered by the free warranty, but maintenance services are provided, and the corresponding accessories and labor costs are charged:
 - a Damage caused by consumers due to improper use, maintenance and storage;
 - b The machine has exceeded the free warranty period;
 - c Damage caused by dismantling by yourself or by the maintenance department not specially appointed by our company;
 - d No product warranty card or valid proof of purchase, and no user information file can be verified;
 - e Damage caused by force majeure such as natural disasters;

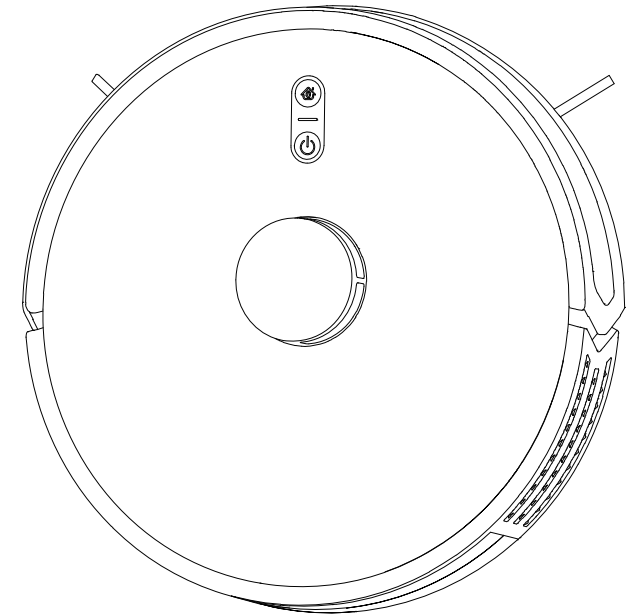
Quality Certificate

Date of production _____

Inspector _____

Robot vacuum cleaner

User Manual



*This product is subject to the real product, and our company reserves the right to update the product.
If there is any change, it will not be notified.

Thank you for choosing our robot vacuum cleaner!
Please read this manual carefully before use and
keep it for future reference. Hopefully we shall render
you a more convenient life of smart home.

This product is subject to the material object. Our
company reserves the right to update the product
without prior notice.

Best wishes!

Contents

Safety precaution	1
Product structure	5
How to use the charging dock	10
How to use/remove the water tank and mop	11
Start/stop cleaning	13
APP user guide	14
Product cleaning and maintenance	16
Specifications	20
Maintenance	21
Troubleshooting	24
Corrective action before reporting a failure	25
Hazardous substances contained in this product	26
Voice prompt/indicator description	27
Battery recycling	28
Warranty Card/Quality Certificate	29

Please carefully read and understand the following cautions, so as to use this product safely and properly to prevent accidental risks or damages. This product is a household cleaning product, and it is forbidden to be used in commercial, experimental and industrial places.

Caution

- Do not use this product on wet or watery ground.
- Do not over-bend wires or place heavy or sharp objects on the machine.
- Don't touch the cord and power adapter with a wet hand.
- To clean this product and the charging dock, the power plug should be unplugged.
- Remove any items from the floor that may jam the product, such as fragile items, corduroy clothing, paper, packaging materials of any type, curtains, loose cables, etc., and lift curtains and carpets off the floor to avoid accidents .
- Please turn off the power switch when carrying this product or left unused for a long time.
- Don't put this product around burning objects, including cigarette, lighter or anything that is likely to cause fire. Don't use it with inflammable around, such as ether, alcohol, chemicals, liquefied natural gas, flammable sprays, insecticides, air fresheners, cosmetics, etc.
- Don't wipe or spray this product with beverages, flammable and volatile substances or surfactants (detergents, bath products, etc.).
- For indoor use only.
- Do NOT place any objects on top of this product.
- When this product is working, please ensure that everyone in the room knows that this product is working, and be careful not to drop or be injured by this product.

Caution

- Please keep infants and pets away when this product is working.
- Do not store or use this product in places (tables, furniture, railings, stairs, chairs, etc.) where it may fall onto the floor.
- Do not use this product on a sloping surface.
- Be careful not to let your hands, feet, hair or clothes get stuck in the brushes or wheels when using or cleaning this product.
- The operating and storage temperature of the product ranges from 5°C to 38°C.
- Do not use this product in a high temperature environment or in hot sunlight for a long time.
- Before using this product, please make sure that the dust collector is empty.
- Do not use this product in a space where people or pets sleep or lie down.
- If the product emits smoke when charging, please unplug the power plug immediately and contact our customer service.
- Do not push the charging terminals with your hands; never use charged objects to contact the charging terminals, it may cause injury.
- For initial use, to ensure safe operation, please keep observing this product while it is working.
- For safety reasons, please do not allow children under the age of 8 to use this product.
- This product is not intended for use by persons with reduced physical, sensory or mental capabilities, or lack of experience and knowledge, unless they have been given supervision or instruction concerning use of the product by a person responsible for their safety

 Notes

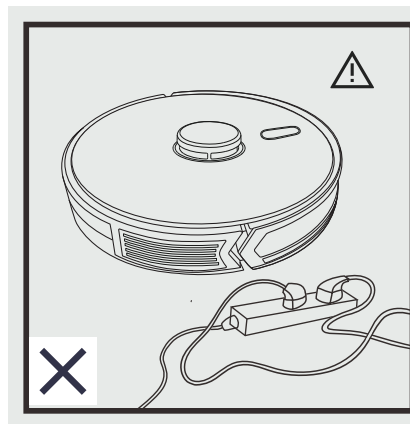
- Before using the product, please wipe off the liquid (water, oil, etc.) and pet excrement on the floor to prevent secondary pollution.
- Before using the product, be sure to check if a filter is installed on the product.
- You can wash dust collector and water tank with water, and make sure you dry it well after each cleaning.
- Only the battery and power adapter provided by the factory can be used with this product. This product can only be dismantled and repaired by authorized technician. Please dispose of this product properly to meet the requirements of environmental protection.
- Before use, be sure to remove packaging materials, bubble bags, styrofoam, etc.
- Please properly dispose of the relevant packaging materials (bubble bags, styrofoam, etc.), and do not let children play with.



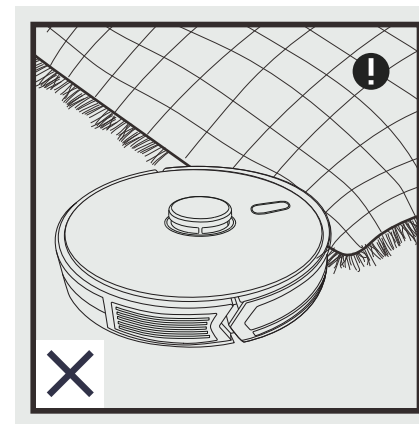
We are not responsible for any damage or injury if users do not read the cautions and use them improperly. Please be sure to read the relevant cautions carefully before use.

Notes:

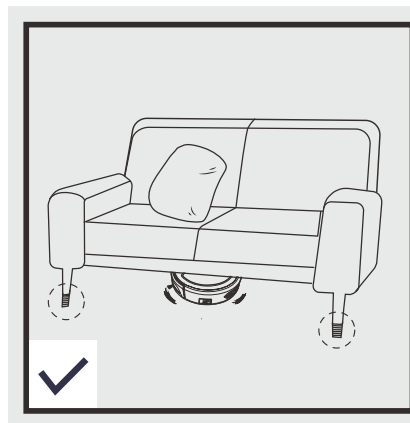
Please organize the cleaning area according to the following guidelines before using the main machine.



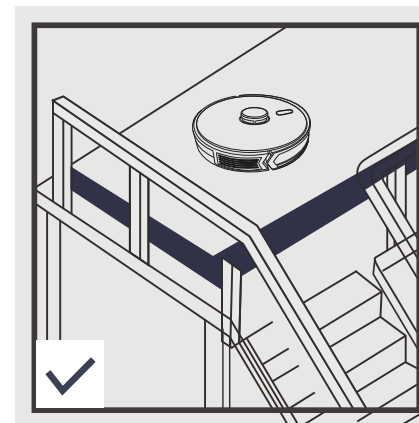
The power cord and other sundries scattered on the ground may entangle or wrap the product. Be sure to remove them before use.



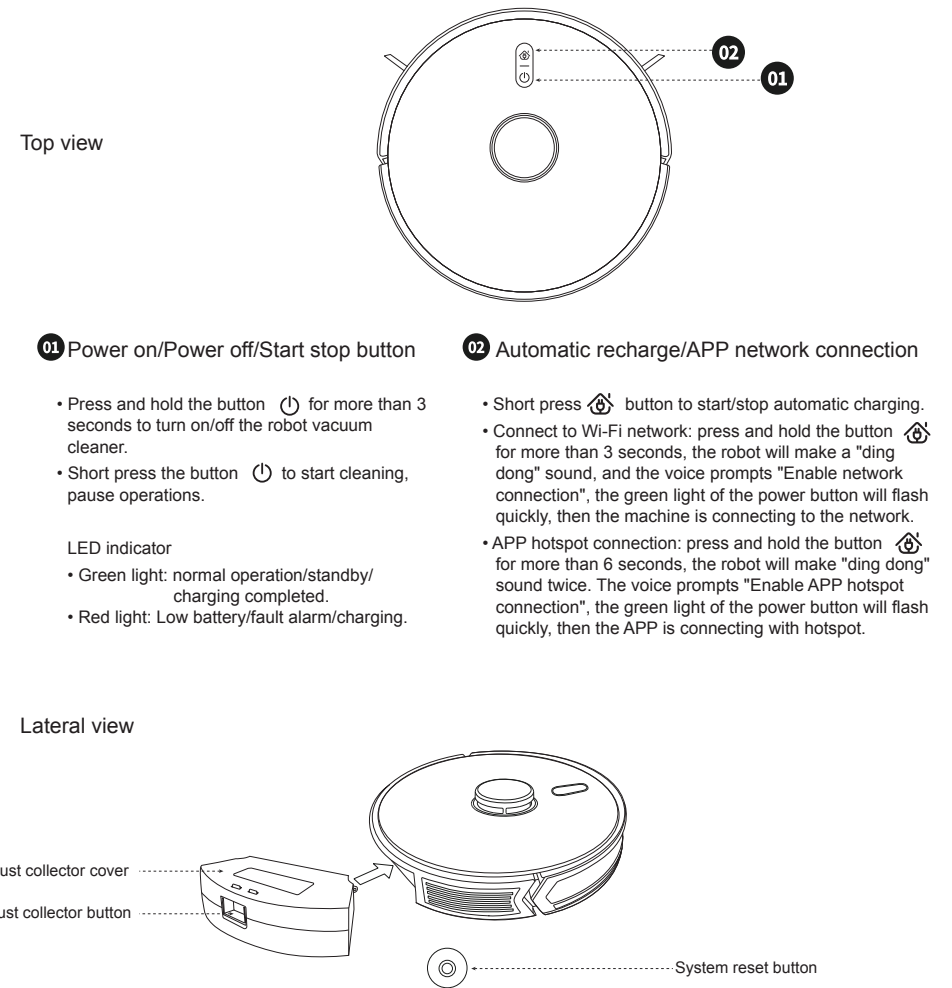
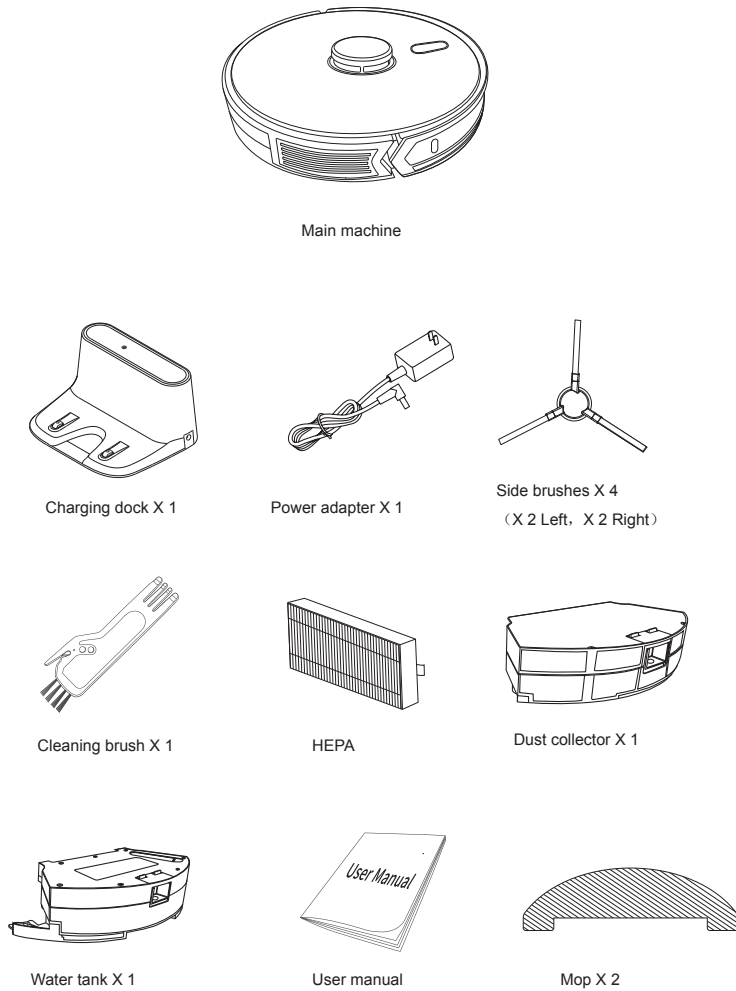
Please roll up the fringe of the carpet or make the product work on the short-wool carpet.



The gap of less than 10 cm at the bottom of the household furniture may stick the product. If cleaning is needed, please raise the furniture.



Guardrails shall be placed at the edge of the double layer to ensure the safe operation of the product.



Main machine

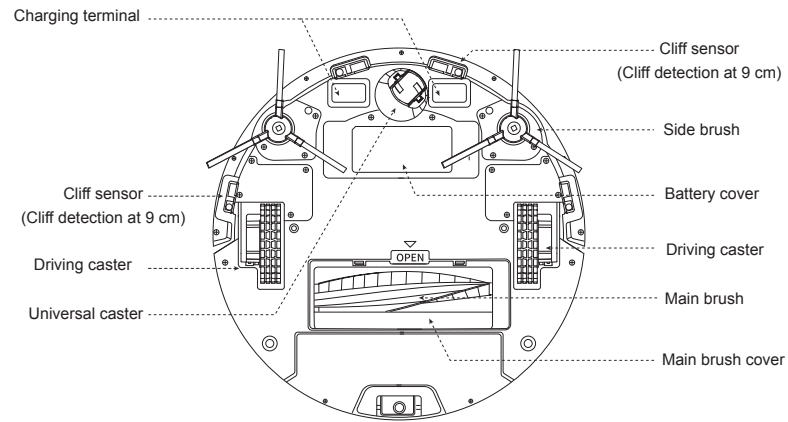
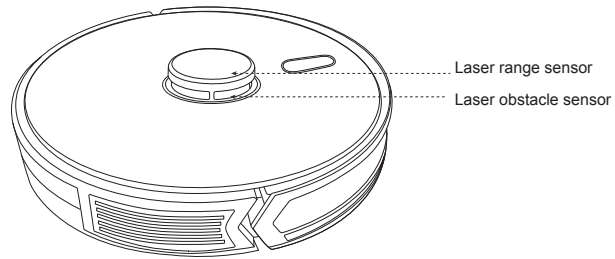


Diagram of dust collector

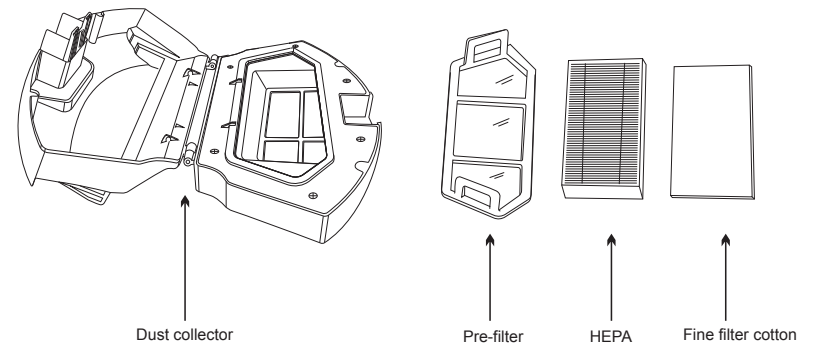


Diagram of main brush

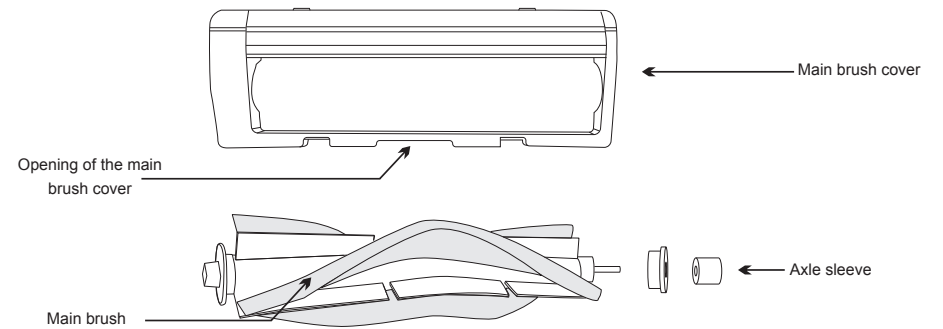
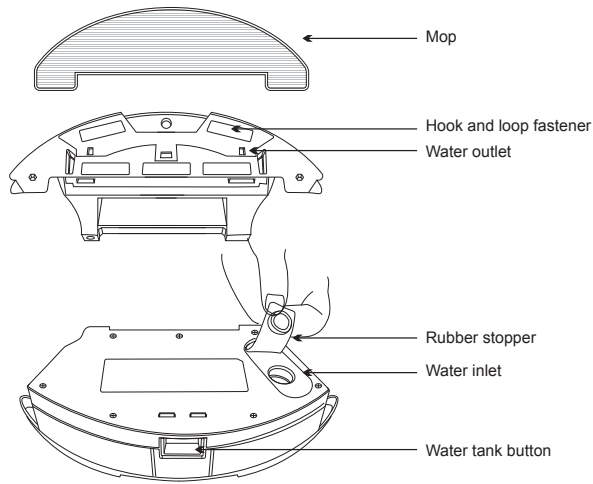
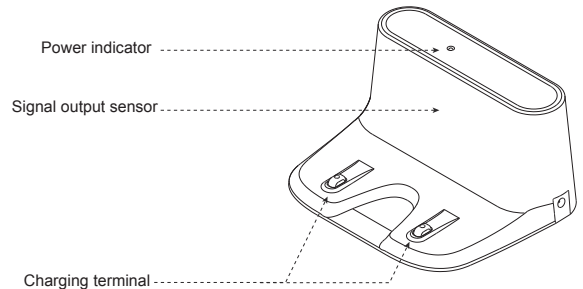


Diagram of water tank



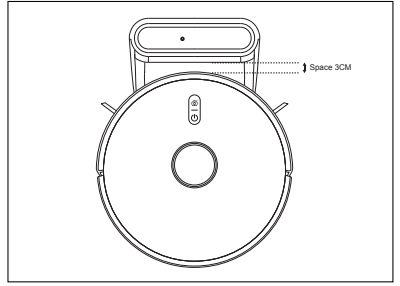
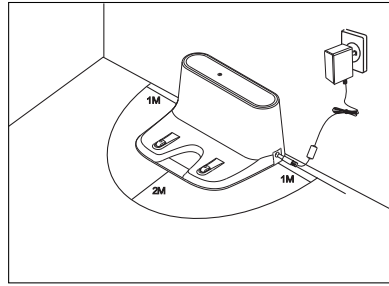
Charging dock



1. The indicator light will turn off when it is working.
2. The indicator light stands on indicates standby mode of the charging dock.

Notes

- When charging the robot vacuum cleaner, if the water tank is in the main machine, please replace the dust collector before proceeding.
- When charging, if you apply pressure to the charging terminal by hand or a charged object, it may cause personal injury.
- Do not install the charging dock in a damp place or in a place where the sun shines directly.

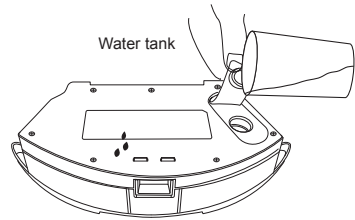


- 01** Place the charging dock on a flat surface, close to the wall, press the power button on the main machine until the indicator lights up, and then connect the charging adapter to the socket.
 - 02** Press the power button on the main machine until the indicator lights up, and then connect the charging terminal of the charging dock to charge.
- There must be a space around the charging dock (2m in front and 1m on the left and right sides).
 - When placing the charging dock, please place the back of the charging dock against the wall in a shaded place.
 - When the battery is low and the power cannot be turned off, the battery must have at least 20% remaining power to run normally.
 - If the position of the charging dock changes, the robot may not be able to find the previously saved route.
- Be sure to use the supplied dedicated charging adapter.

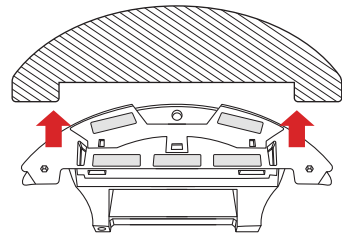


Notes

- The excess water of mop may affect the operation of robot vacuum cleaner, please squeeze and dry it before use.
- The mop may have the problem of color shift due to the nature of the fabric. Please keep it clean and dry after use.



- 01** Open the water inlet of the water tank, fill it with water, and then cover the rubber plug.

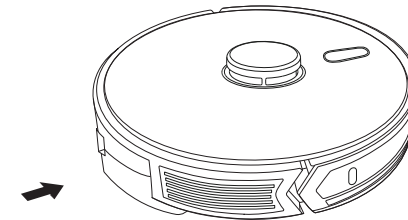


- 02** Fix the mop with hook and loop fastener on the bottom of the water tank.
- If the rubber plug is not properly plugged, it may leak water. In addition, it is recommended to wet the mop with water, and then squeeze it hard before use.

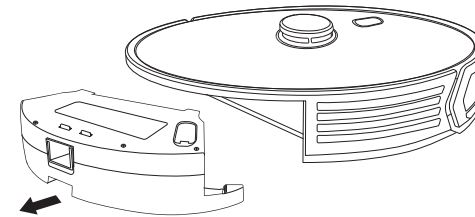


Notes

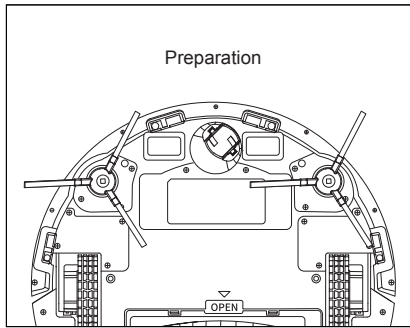
- If the water stays in the water tank for a long time, it may be polluted and give off peculiar smell.
- After cleaning the water tank, empty the remaining water, and then open the rubber plug to dry.



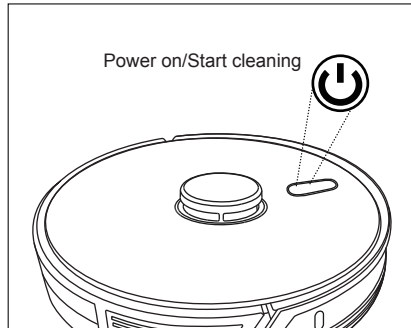
- 03** When installing the water tank, put it into the product body and slide horizontally until it clicks.



- 04** After cleaning, press the button in the center of the water tank to separate it from the body, and then pour out the remaining water. After that, remove the mop and clean the mop and dust collector.

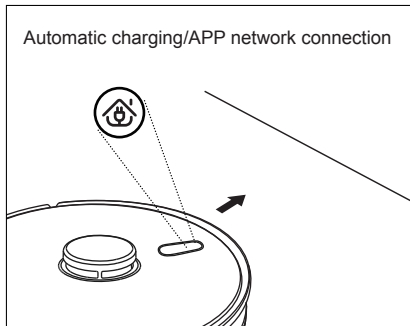


The side brushes are installed on both sides of the bottom of the main machine.



Power on Press and hold the power button for more than 3 seconds to turn on the power.

Start cleaning After turning on the machine, short press the power button to start cleaning.

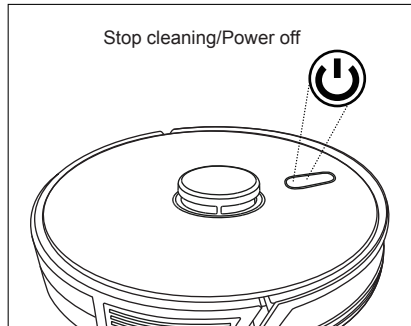


Manual charging Short press the automatic recharge button to start automatic charging/stop charging

Automatic charging When the cleaning is completed or the remaining battery power is lower than 20%, the robot will automatically move to the charging dock and start charging automatically.

Break point resume The robot will automatically resume previous unfinished task when the its charging power reaches 80% or higher.

APP network connection Long press this button to start the APP network connection; Please refer to page 6 for details (Product structure)



Stop cleaning During the cleaning process, short press the power button to pause cleaning.

Turn off the power Press and hold the power button for more than 3 seconds to turn off the power.

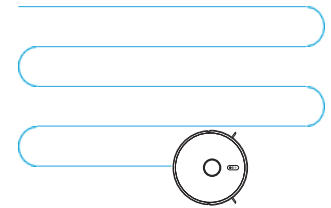
- The power cannot be turned off while charging. Please turn off the power after disconnecting from the charging dock.

Notes

- By installing the “Tuya Smart” APP, you can use your smartphone to perform various functions.
- For detailed instructions on how to use the APP, please refer to the attached APP User Guide.

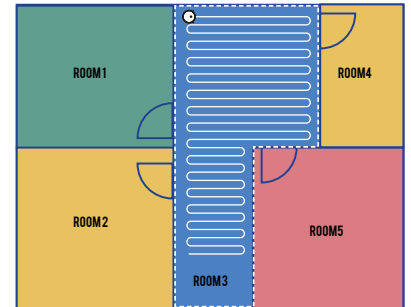
Smart clean

After starting up, the robot vacuum cleaner will pause for mapping and positioning, then start to create maps along the corner scanning environment, and then plan the cleaning path in an “S” shape. The robot will automatically create a cleaning area, clean efficiently in sequence, and automatically return to the charging dock to charge after cleaning.



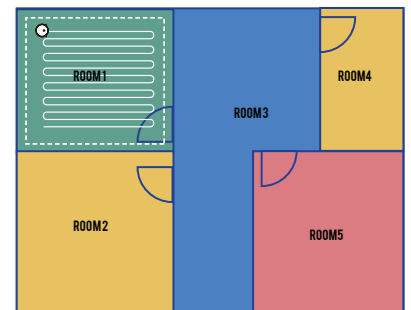
Zone clean

First, set the cleaning zone in the APP, and the scanned map will be displayed in the APP. You only need to touch the zone to be cleaned, and then click “Save”, and the robot will automatically move to the designated area for cleaning.



Room clean

Click on “Room clean” in the APP, click “add area”, a virtual box appears on the map, move the box to the designated cleaning area, and then click “Start” to start the robot moving to the designated area for cleaning.



Notes

- By installing the “Tuya Smart” APP, you can use your smartphone to perform various functions.
- For detailed instructions on how to use smart APP, please refer to the attached APP User Guide.

Smart clean/Area clean

With this APP, you can set the range and location of the area to be cleaned as well as one or more areas, and it will clean according to the set areas.



Area clean

Set no-go zone/virtual wall

You can use the APP to set the no-go zone, and you can set one or many no-go zones. The robot vacuum cleaner will not clean the set no-go area and only clean other areas.



Set no-go zone

Scheduled clean

If you use the APP to schedule the cleaning time, the cleaning will automatically start at the specified time. After cleaning, the robot vacuum cleaner goes to the charging dock to start charging.



Scheduled clean

Do Not Disturb mode

When you activate “Do Not Disturb” mode, the robot vacuum cleaner will not automatically clean or play voice guidance. You can use this APP to turn “Do Not Disturb” mode on or off.



Do Not Disturb

Suction setting

You can use this APP to control water quantity and suction. Each can be adjusted in three options.



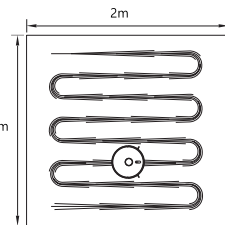
Water control



Suction power control

Y-MOPPING

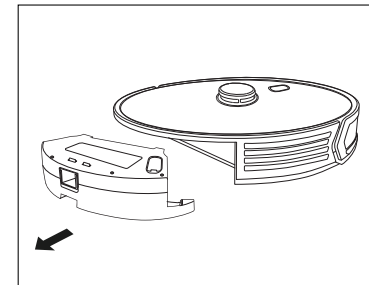
Open the APP, click on “Settings” and turn on “Y-MOPPING” switch, the robot will start mopping the floor in Y-shape pattern.



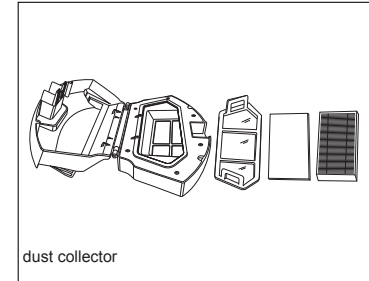
Notes

- Before cleaning the product, be sure to turn off the power supply to prevent malfunction and electric shock.
- If the dust collector is full of dust or the filter is mixed with impurities, the suction may be weakened.
- Please clean with water and completely remove the moisture before using the dust collector.

01 Press the button in the center of the dust collector to separate it from the main machine.

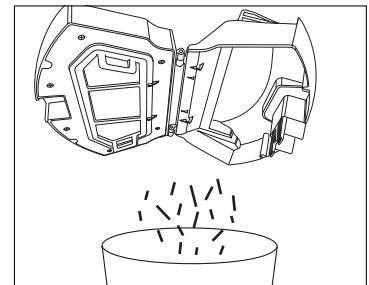


02 Open the dust collector and take out the filter screen, filter sponge and pre-filter.



dust collector

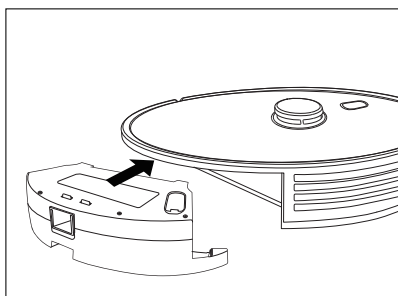
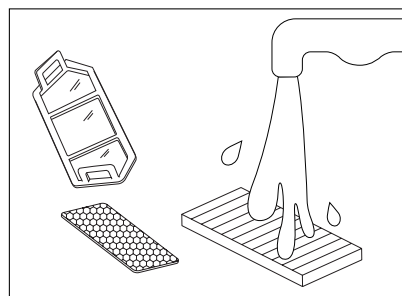
03 After emptying the dust collector, please rinse it with water.
 • All kinds of dust collector can be cleaned with water. Please use it after it is completely dried.





Notes

- Do not use detergent for cleaning. Please be sure to clean with clean water.
- We recommend that every time you use the dust collector when you are not at home, empty the dust collector and clean it with water. If the shape of the filter screen is deformed or does not match the filter screen cover, please replace it.
- If the filter is washed with water, please dry it in a well-ventilated shade for at least 24 hours, because it may give off peculiar smell if the water is not completely removed.



04 After disassembling the filter, filter sponge and pre-filter, please clean it with running water and make it completely dry.

- Please clean the filter, filter sponge and pre-filter after long-term use.
- The cleaning cycle of the filter is usually 2 weeks, and the cleaning life of the filter is about 50 times.

05 After the separated filter, filter sponge and pre-filter are assembled into the dust collector, push them horizontally until they are clamped into the machine body.

- Make sure that the filter is completely dry before turning it into the dust collector.

Clean or replace each part, if necessary.

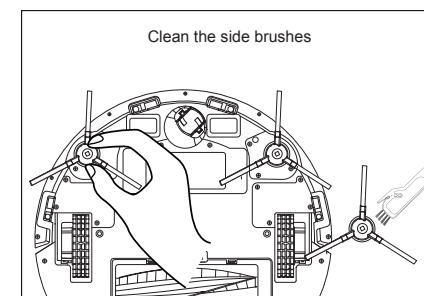
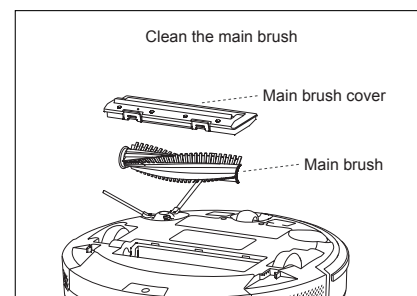
Unit	Recommended cleaning cycle	Recommended replacement cycle
Filter	Two weeks	6 months
Main brush	After prolonged use	6 months
Side brush	After prolonged use	3-6 months

※ The dust collector and water tank are semi-permanent.



Notes

- If the water stays in the water tank or the 2-in-1 dust compartment (water tank + dust collector) for a long time, the water may be polluted and may give off peculiar smell.
- After cleaning the water tank or the 2-in-1 dust compartment (water tank + dust collector), please empty the remaining water and open the rubber plug to remove the water.



01 Remove the main brush cover on the back of the machine.

02 If there is any foreign matter on the suction port or the main brush, please use a cleaning brush to remove it. (The main brush can be washed with water. After washing with water, please completely remove water before use.)

01 Remove the side brushes installed on both sides of the back of the machine.

02 Clean all foreign matters with a cleaning brush and wipe it with a clean cloth. (The side brushes can also be washed with water. After washing with water, please completely remove the water before use.)

Notes

- Be sure to turn off the power before cleaning the product to prevent malfunction and risk of electric shock.
- Regular maintenance and effective cleaning are recommended.
- Do not use volatile solvents or glass solvents (thinners, solvents, acetone, etc.) to clean the product.

Clean the laser range sensor

Gently wipe all the sensors and the charging terminal on the main machine with a swab or soft cloth. If the sensor or charging terminal is damaged, please contact our customer service.

Clean the sensors and the charging terminal on the charging dock

Gently wipe the signal output sensor and the charging terminal on the charging dock with a swab or soft cloth.

Battery management

This product has a built-in high-performance rechargeable lithium-ion battery pack. In order to maintain the battery performance, please charge the main machine according to the amount of electricity used every day (in the case of long-term non-use, please charge the main machine once every three months to maintain the battery performance).

The warranty period of the battery is 6 months and the best replacement period is about 1 year. After 300 times of charging, the battery performance is 20% lower than the initial level.

-19-

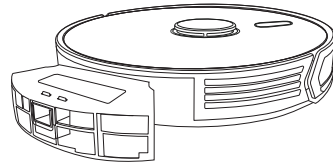
	Items	Description
Parameters	Product name	Robot vacuum cleaner
	Model	X6
	Rated voltage (V)	14.8V
	Charging type	Automatic charging
	Full charge time	5 - 6 hours
	Working time	100-140 minutes
	Diameter	345x345x96mm
	Weight	3.5kg
Performance	Working power	40W
	Noise(Min.-Max.)	55-70dB
Battery	Battery voltage	14.8V
	Battery capacity	2600mAh
Main performance	Cleaning mode	Dust collection + Wet-mopping function
Effectiveness of vacuuming	Dust suction power	900-2700Pa
	Dust collector capacity	650ML
Wet-mopping performance	Wet-mopping mode	Support
	Water tank capacity	350ml
Working performance	Sensor	LDS sensor (laser ranging)
		Hall sensor (detection of water tank and mopping)
		Cliff sensor (infrared)
		Wall detection sensor (Laser)
		Bumper (to prevent damage to furniture)
	Intelligent performance	Low battery automatic charging function
		Carpet auto pressurization
		Voice prompts
		Scheduled cleaning and break point resume
	Mobile APP control	Y-MOPPING
		Remote control
		Real-time cleaning status/area
		Virtual wall/ no-go zone settings
		Setting up no-go zone
		No-go zone for mopping
Room clean		
Area clean (designate where to sweep)		
	Use of App links	
Others	Gradeability	20mm

-20-

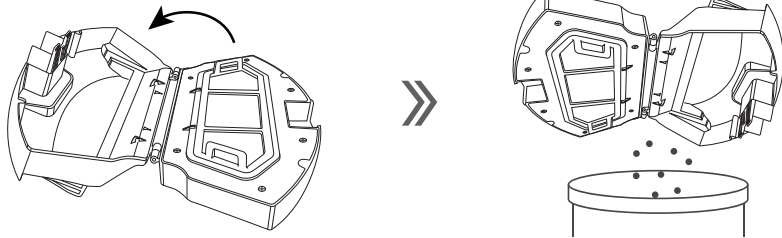
★ When cleaning and maintaining the main machine and its accessories, please turn off the main machine and unplug the power supply of the charging dock.

4.1 Clean the dust collector and filter elements

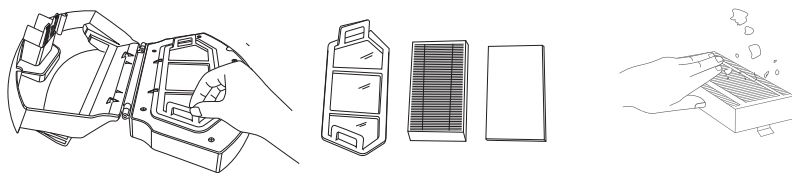
Take out the dust collector.



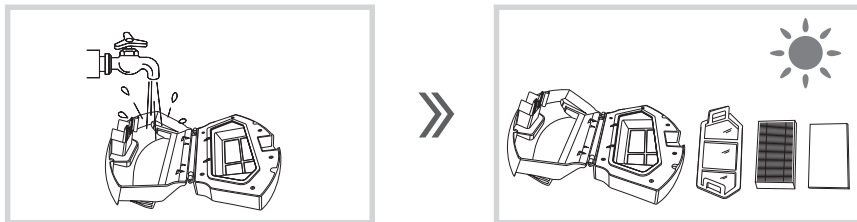
Open the dust collector lock, clean up the garbage.



Remove the filter elements. You can wash the high-efficiency HEPA filter with water or gently pat it to remove dust. After washing, please dry it before use.



Wash the dust collector and the Pre-filter, dry the dust collector and filter elements, and keep them dry to ensure their service life.



Clean the water tank subassembly

1 Clean the wet mop

Disassembly: After mopping the floor, please take out the water tank first, remove the mop holder and the wet mop.

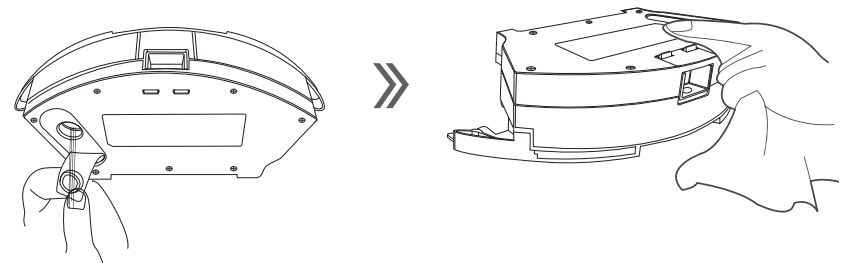
Maintenance: Rinse and dry the wet mop.



2 Clean the water tank

Disassembly: After mopping the floor, take out the water tank subassembly, remove the wet mop, and drain the remaining water in the water tank.

Maintenance: Wipe the water on the water tank and let it dry.



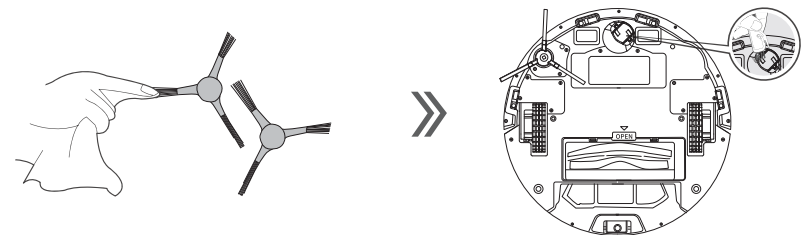
Clean the other components

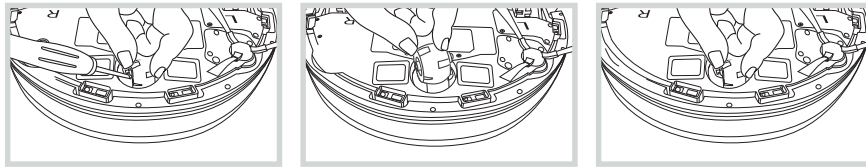
1 Clean the side brush

Remove the side brushes and wipe it with a clean cloth.

2 Clean universal caster

Remove the hair from the universal caster.





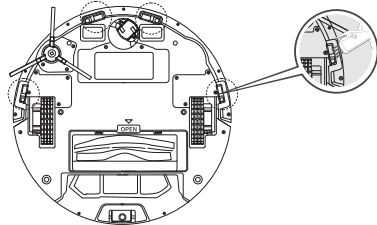
Step 1: carefully pry out the universal caster with a slotted screwdriver.

Step 2: take out the universal caster, and remove the hair from the universal caster

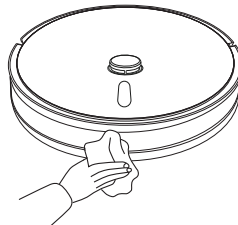
Step 3: put the universal caster back to the installed position and press it down.

5 Clean the cliff sensor

Clean the cliff sensor to ensure sensor sensitivity.



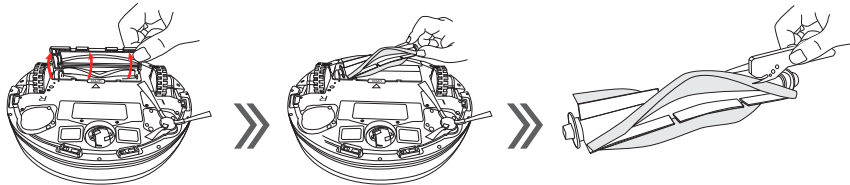
6 Clean the IR sensor window



Clean the IR sensor window

7 Clean the intake port

When the rolling brush is entangled with hair, clean them with a small tool.



8 Clean the charging terminal

Gently wipe the bottom of the main machine and the charging terminal of the charging dock with a soft cloth.



During the use of the product, if the following problems occur, please check the following table to find a solution.

No.	Fault condition	Possible Reasons	Solution
1	The main machine cannot connect to the APP	Wrong router user name and password.	Configure your router, make sure that the entered "Username" and "Password" are correct.
		The main machine is not in network signal range.	Make sure the main machine is in network signal range.
		The main machine is not configured.	Configure the network for the main machine.
		The main machine does not connect to 2.4GHz network	This product can not connect to 5GHz network, please connect to 2.4GHz network.
2	The main machine fails to charge	The adapter is not the original model.	The original adapter model should be used.
		Poor charging terminal contact when placing the main machine on the charging dock.	Ensure that the main machine and the charging terminal are fully plugged in place. Check whether the charging terminal and the main machine are dirty and it should be cleaned by referring to the Maintenance instructions.
		The charging dock is not connected to the power supply.	Make sure that the charging dock and the power supply is connected.
		Battery over discharging after left unused for a long time	If it is not used for a long time and cause the battery can not be charged, please contact our after-sales service.
3	The main machine fails to recharge	The charging dock is placed incorrectly	Place the charging dock correctly according to the charging method.
		The charging dock is powered off or manually moved.	Please check whether the charging dock is connected to the power supply. Do not move the charging dock.
		The main machine is stuck by ground obstacles, such as wires, carpet corners, electric fan base, etc. or the door of the room with the charging dock is closed, which makes it impossible to return to the charging dock.	It is recommended to remove the ground objects with reference to the Safety precautions before using the robot to ensure smooth running. Avoid jamming and keep the recharging route smooth.
		The main machine did not start cleaning from the charging dock.	It is recommended that the main machine start cleaning from the location of the charging dock.
4	When the main machine is working, there are situations such as disorderly route, deviation, repeated cleaning and small areas fails to get cleaned up.	Wires, slippers and other objects placed on the ground affect the normal operation of the main machine.	Please arrange scattered wires, slippers and other objects on the ground before the robot works. In case of areas fails to get cleaned up, the robot will automatically detect the area and complete the cleaning, please do not intervene manually (such as moving the robot or blocking the robot's working route).
		Working on the newly waxed and polished floor reduces the friction between the driving wheel and the ground.	It is recommended to use the robot after the floor wax is dry.
		Due to different home environments, the robot cannot perform cleaning in some area.	It is suggested to arrange the home environment to ensure that the robot can work on the floor.
5	The main machine is stuck during operation	The main machine entangled or obstructed by scattered wires, drooping curtain cloth, carpet whisker, etc. on the ground.	The main machine will try various ways to get rid of the difficulty. If it fails, manually move the main machine is recommended.
		The robot may be stuck by furniture which its bottom height is similar to that of the robot.	It is suggested that furniture should be raised or sheltered artificially.
6	When the main machine is working, the running sound is loud.	Side brushes are entangled, dust collector and filter materials are blocked, etc.	It is recommended to clean and maintain the side brushes, dust collector and filter materials regularly
7	The main brush does not rotate	The main brush is entangled with hair.	Clean away all the hair that got entangled to the rolling brush.
		The main brush and rolling brush shield are installed incorrectly	Reinstall the rolling brush assembly.
		The rolling brush assembly sucks in foreign matter.	Disassemble the assembly and remove the foreign matter from the rolling brush assembly.

Corrective action before reporting a failure

9	The main machine failed to start	The main machine is out of power or the power switch is off.	Please charge the main machine or turn on the power switch.
	The main machine shakes when running	Side brush or caster tangled with hair.	Please clean the hair around the side brush and caster.
	Abnormal operating condition	The intake port is blocked or the dust collector is full.	Please check the intake port and clean the dust collector.
		HEPA is blocked.	Clean or replace the HEPA.
	Water not coming out.	The water outlet of the water tank is blocked or the water tank is empty.	Please blow the water outlet and fill it with water
		The pump does not work.	Please contact our company for after-sales maintenance.
The main machine skid	The ground is wet.	Please wring out the mop and remove the water stains on the floor.	
The main machine keeps going backwards	Abnormal cliff sensor.	Please clean the surface of the cliff sensor.	

If the problems cannot be solved according to the above operation, please contact our after-sales service.

Please read the following information before contacting our customer service.

No.	Situation	Action	Solution
1	The main machine fails to turn on	<ul style="list-style-type: none"> The power of the main machine is turned off. The battery is dead 	<ul style="list-style-type: none"> Please turn on the power. Please try again after manual charging is complete.
2	The power turns off automatically.	<ul style="list-style-type: none"> It has not been charged for more than 10 minutes. It has not been stuck on an obstacle for more than 10 minutes. 	<ul style="list-style-type: none"> The power will automatically turn off. If it has not been charged for more than 10 minutes, please keep charging. Please restart the machine after removing obstacles around the main machine.
3	Battery can't charge.	<ul style="list-style-type: none"> The power of the main machine is turned off. There are obstacles around the charging dock. The power indicator of the charging dock does not light up. There is a foreign object on the charging terminal. 	<ul style="list-style-type: none"> Please turn on the power. Clear all obstacles around the charging dock. Please check that the charging dock and socket are well connected. Wipe the main machine and charging terminals of the charging dock with a dry cloth.
4	Weak suction power.	<ul style="list-style-type: none"> The suction port is stuck by foreign object. The dust collector is full. The filter of the dust collector is clogged. 	<ul style="list-style-type: none"> Please remove any foreign objects stuck in the suction port. Please empty the dust collector and clean the filter.
5	Loud noise.	<ul style="list-style-type: none"> The dust collector is not properly installed. The filter is not properly installed in the dust collector. There is a foreign object stuck on the bottom or side brush. 	<ul style="list-style-type: none"> Please properly attach the dust collector to the main machine. Please install the filter correctly. Please remove any foreign objects stuck on the surface of the machine body or on the side brushes.
6	The robot is not working properly.	<ul style="list-style-type: none"> The power is turned off. 	<ul style="list-style-type: none"> Please turn on the power.

Hazardous substances contained in this product

No.	Situation	Action	Solution
7	Side brushes do not rotate.	<ul style="list-style-type: none"> The side brush is not properly installed. A foreign object is stuck in the side brush. 	<ul style="list-style-type: none"> Please remove the side brush from the body and reinstall it. Please remove any foreign objects stuck in the side brush.
8	The robot is operating abnormally.	<ul style="list-style-type: none"> There is a foreign object in the sensor part. The mop sensor is blocked or not properly connected. There is a foreign object stuck in the wheels. 	<ul style="list-style-type: none"> Use soft cloth to clean the foreign objects cover on the sensor. Make sure the mop does not cover the sensor part. Make sure the mop is properly attached to the hook and loop fastener. Make sure the mop is wet. Remove the foreign objects entangled on the wheels.
9	The main machine won't charge when it is connected to the charging dock.	<ul style="list-style-type: none"> The power light of the charging dock is off. There is a foreign object cover the charging terminal of the charging dock. 	<ul style="list-style-type: none"> Make sure the charging dock is well connected to the socket. If the power light is on, press the system reset button. Remove any foreign objects adhering to the charging terminals.
10	The robot cannot connect to the App.	<ul style="list-style-type: none"> The robot cannot receive the wireless network signal. The internet is not working. The router has been changed. 	<ul style="list-style-type: none"> Make sure the product is running in wireless network range. Make sure the router used to register the product can access the internet. After registering the product, please check whether the router has changed, re-register the product if necessary.

Component Name	Hazardous substance					
	Lead (Pb)	Mercury (Hg)	Cadmium (Cd)	Chromium VI (Cr(VI))	Polybrominated biphenyls (PBB)	Polybrominated diphenyl ethers (PBDE)
Plastic parts	○	○	○	○	○	○
Hardware	X	○	○	○	○	○
Circuit block	X	○	○	○	○	○
Battery	○	○	○	○	○	○
Plug, power cable (metal)	X	○	○	○	○	○
<p>"○" indicates that the content of the hazardous substance in all homogeneous materials of the part exceeds the limit stipulated in the current effective version of GB/T26572.</p> <p>"X" indicates that the harmful substance contained in at least one homogeneous material of the component exceeds the limit stipulated by the current effective version GB/T26572, and there is no mature alternative plan in the industry, which conforms to the environmental protection requirements of EU ROHS directive.</p>						



The number in this logo indicates that the environmental protection service life of the product is 10 years under normal and practical conditions.

Executive standard

GB4706.1-2005 GB4706.7-2014

GB4343.1-2009 GB-17625.1-2012

Indicator description

Status	Display
Charging	Breathing red light
Battery is full charge	Green light always on
When the machine fails	Red light always on
Low power	Red light always on
Cleaning mode	Green light always on

When something goes wrong with the machine, the red light is always on, and the voice prompts at the same time. At this time, move the machine position and turn off the machine, then restart it.

Voice prompts description

When the main machine fails, the home button will be flashing red light or stays on, and voice alarm will be heard. Please refer to the following table to inquire the cause of the failure.

No.	Voice prompt	Cause of failure	Solution
1	Battery is low, please charge the robot vacuum cleaner	Battery below 12V	Charge the machine
2	The main brush is stuck	The main brush is entangled with foreign matter	Remove the foreign matter from the main brush
3	Caster off the ground	The machine is lifted during operation	Put it back on the ground
4	Please check if the caster is stuck	Caster blocking	Remove foreign matter
5	Please check if the side brush is stuck	Side brush blocking	Remove foreign matter
6	Cliff sensor fails	The cliff sensor is dirty.	Clean the cliff sensor with a soft cloth
7	Please check if the bumper is stuck	Infrared bumper or universal caster stuck	Remove foreign matter
8	The main machine is stuck	Please move the machine to an open area	Move the machine to another place and then restart it.
9	The laser head is stuck	The laser head is dirty or is entangled with foreign matter	Clean the laser head with a wet swab

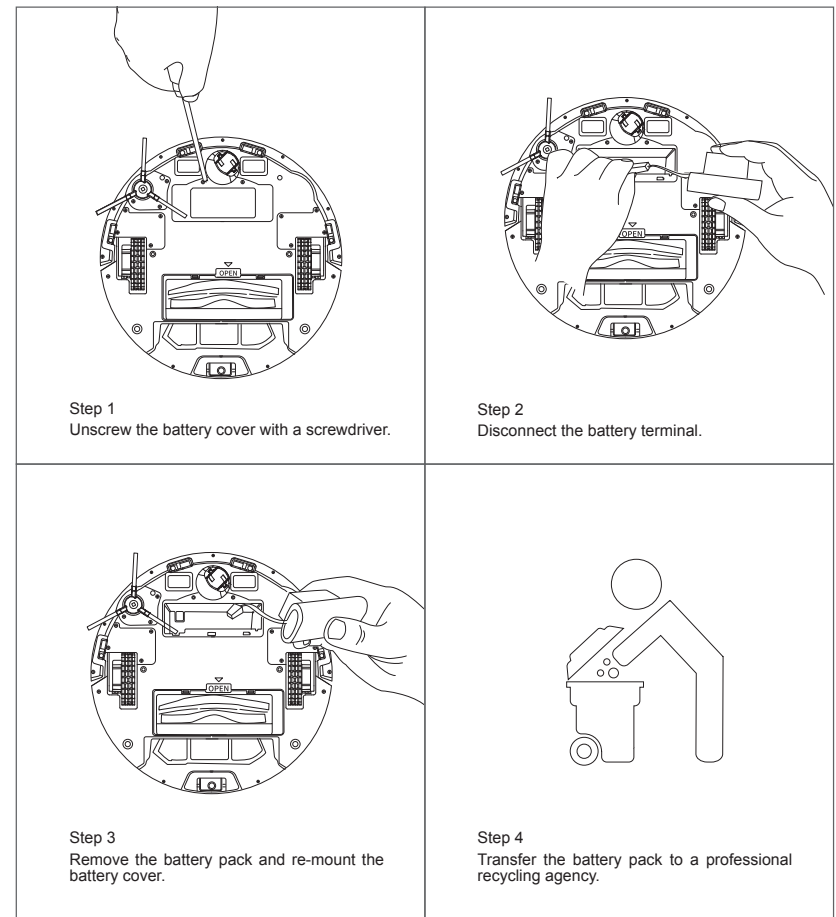
* Warm tips

If the above method does not solve the problem, please try the following:

1. Restart the machine.
2. If the problem cannot be solved by restarting the machine, please send the machine to the after-sales service center for maintenance.

Steps to remove the battery

1. For purpose of environmental protection, user shall dispose this product in compliance with the current national or regional laws and regulations on disposal of waste electrical and electronic products, or transfer this product to a local approved recycling/disposal agency.
2. The battery of the robot shall be removed and disposed safely in accordance with the following procedure only by a qualified full-time engineer of an approved recycling/disposal agency.





1141 Budapest, Fogarasi út 77.

Tel.: *220-7940, 220-7814, 220-7959,

220-8881, 364-3428 Fax: 220-7940

Mobil: 30 531-5454, 30 939-9989

1095 Budapest, Mester utca 34.

Tel.: *218-5542, 215-9771, 215-7550,

216-7017, 216-7018 Fax: 218-5542

Mobil: 30 940-1970, 30 959-0930

www.robotol.hu

E-mail: info@delton.hu Web: www.delton.hu